

MORBILIFY

[www.Morbilify.com](http://www.Morbilify.com)    [info@morbilify.com](mailto:info@morbilify.com)

MORBILIFY

# MDR-150

## 1080P HD Dash Cam w WiFi

---

User Guide



Please read and follow all instructions and features before use. Save for future reference.

Manual Ver 12 20

## Warning – Safety Precaution

- Please read these safety instructions thoroughly before operating the product and keep this manual for future reference.
- Please be aware that micro SD memory card have limited product life expectancy and will eventually degrade in time - causing errors in recordings / data corruption.
- It is highly recommended to format and check the integrity of the Micro SD card on a regular basis. Micro SD memory card related problems are not under warranty and the manufacturer or the supplier is not responsible for data loss or missing recordings.
- Install the device in a manner that does not obstruct the driver's view of the front or sides of the vehicle, or interfere with the safety of operating the vehicle.
- When exposed to direct sunlight for extended period of time, the equipment may become hot. Please exercise caution when touching the equipment.
- Do not operate, adjust or view the MDR-150 while driving or when vehicle is in motion as it may lead to accidents and or injuries.
- Do not place the device insecurely on the dashboard, or place the device in front of or above an airbag.
- Altering and disassembling of the product may result in a fire or electric shock. Disassembling the product will void the warranty. Inquire with Morbilify in the event the product needs repair.

## Warning – Safety Precaution

- Please comply with all local, state and federal driving and traffic regulations.
- To reduce the risk of fire or electric shock, do not expose this unit to water, liquid, rain or moisture.
- Disconnect and replace cable if wire is stripped or damaged.
- In the event of an impact or accident, please check to ensure the equipment is properly secured. Inspect the mounting bracket and adhesive for any signs of damage.
- Do not put foreign material into card insertion slot of the terminal, it may cause product damage.
- The product is designed to be installed inside the vehicle. Any damage caused by placing the device outside the vehicle, or damage due to misuse or handling of the product will void the warranty.
- The warranty does not cover claims related to mishandling, tampering and / or disassembling of the product.

### IMPORTANT NOTICE

#### Built-In Shock Sensor

- **The built-in shock sensor may not recognize slight shock or minor collision as an event. Different sensitivity levels may be adjusted to match the level of sensitivity.**

#### GPS Signal:

GPS Signal may take several minutes to acquire depending on several factors such as location, environment, buildings.

## Windshield Mounted Device Legal Notice

Please check and comply with ALL local, state and federal laws and regulations regarding windshield mounted devices. Some state laws prohibit drivers from using suction mounts on their windshield when operating motor vehicles. Other state laws allow the suction mount to be mounted to be located only in specific locations on the windshield. Numerous states have enacted restrictions against placing objects on the windshield in locations that obstruct the driver's vision.

**IT IS THE USER'S RESPONSIBILITY TO MOUNT MORBILIFY EQUIPMENT IN COMPLIANCE WITH ALL PPLICABLE LAWS AND ORDINCANCE.**

## Audio and Video Recording Legal Notice

Certain local, state and federal laws may prohibit recording of audio and or video in vehicles or public area, or without knowledge and or consent, please check and comply with ALL local, state and federal laws and regulations.

Certain local, state and federal laws may require signage or display that indicate recording of audio and or video in vehicles or public area. Please check and comply with ALL local, state and federal laws and regulations.

**IT IS THE USER'S RESPONSIBILITY TO USE MORBILIFY EQUIPMENT IN COMPLIANCE WITH ALL PPLICABLE LAWS AND ORDINCANCE.**

Use of this product other than its intended purpose is strictly prohibited.

Morbilify does not assume any responsibility for any fines, violation, penalties or damages that may be incurred as a result of the use of the product.

Morbilify is not responsible for any direct, indirect, incidental or consequential damages, arising out of use, misuse or inability to use of our products.

## MDR-150 Specifications

Item	Description
Image sensor	1/3" CMOS sensor
MCU	Novatek
Video Resolution	1920 x 1080 @ 30 FPS 1280 x 720 @ 120 / 60 / 30 FPS
Storage media	Max. up to 64GB class 10 / U1 or above Micro SDHC
LCD display	2" LCD 360 x 240
Lens	140 Degrees Wide Angle Lens F/2.0
WiFi	Built-in
Video Format	MP4 MOV
Still image picture Format: JPEG	8 MP (3264 x 2448)
Shutter (Electronic shutter)	Auto: 1/2 ~ 1/2000 sec.
G-Sensor	3-Axis G-Force sensor
Exposure (EV)	+2, +5/3, +4/3, +1.0, +2/3, + 1/3, 0.0, -1/3, -2/3, -1.0, -4/3, - 5/3, -2.0
Wide Dynamic Range (WDR)	Yes
Microphone / Rec Audio	Yes
Speaker	Yes
Connection	Mini USB
Battery	Built-in 300mAh Li-ion rechargeable (This battery is NOT replaceable)
Working Voltage	12 VDC – 32 VDC
Operating Temperature	32° ~ 120° F
Operating Humidity	20 ~ 70% RH
Storage Temperature	-2° ~ 155° F
Dimensions	65.8 x 36.7 x 50.8 mm
Weight	Approx. 77g (without memory card)

## 1 Introduction

Morbilify MDR-150 is an all-in-one high performance Dual Camera Vehicle HD Recorder. The plug and play setup makes this system the ideal choice for both passenger and commercial vehicle.

### 1.1 Features

- \* Wide Dynamic Range Imaging (WDR)
- \* 1080P Full HD video
- \* 140 Degree Wide Angle Lens
- \* Built-in G-sensor
- \* Built-in WiFi
- \* Motion Detection
- \* Passive GPS record speed and route history

### Package Contents

MDR-150 Camera



Windshield Suction Mount



Car Charger



USB Cable

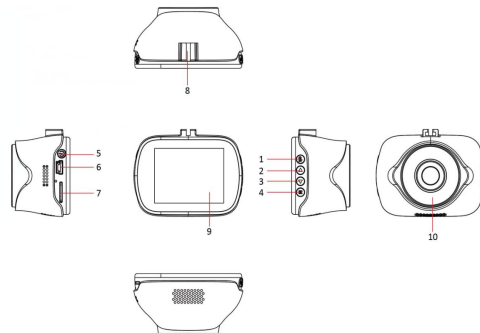


EX15-GPS GPS Receiver Power Cable (page 16)

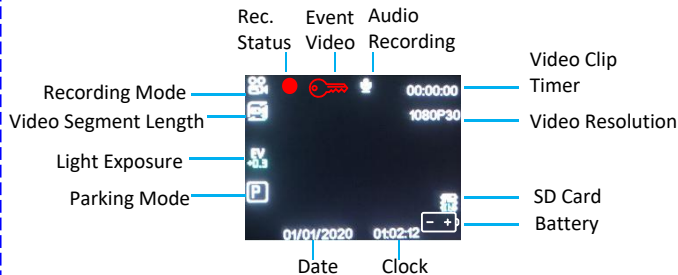


## 1.2 Product Overview

### MDR-150 Main Camera



Number	ITEM	Number	ITEM
1	Enter / OK	6	USB connection
2	Up selection	7	Micro SD card slot
3	Down selection	8	Mount bracket slot
4	Menu / Mode	9	LCD screen
5	Power Button	10	Lens



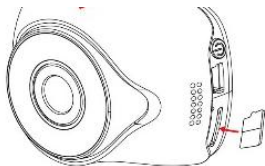
## 2 Getting Started

### 2.1 Inserting the Memory Card

Insert the Mirco SD card (**max. 64GB capacity** – not included) into the MDR while system is powered OFF. Gently push the memory card in place until it clicks

#### To remove the memory card

Power off the system first, then gently push to eject the memory card out of the slot.



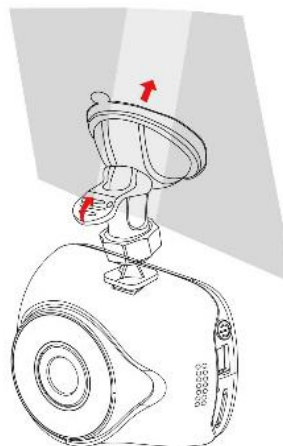
64GB Max. capacity  
– not included

#### Important Note:

1. Do **NOT** remove or insert the memory card when the camera is powered on. This will corrupt the file and damage the memory card.
2. It is recommended to use Class 10/U1 or above micro SD card.
3. Please format the micro SD card prior to the initial use.
4. Only purchase SD cards from authorized reseller to ensure quality and performance
5. SD cards require periodic maintenance (Format) to ensure optimal performance. SD cards can be formatted in the MDR-150.
6. Formatting SD card will erase all data, please ensure important files are backed up prior to format

### 2.2 Installing in Vehicle

1. Attach the bracket to the MDR main camera. Slide it into the bracket holder until click.
2. Select the location to mount the MDR. Ideally in the center section of the windshield, below the rear view mirror.
3. Before installing the bracket, please use alcohol to clean the windshield. Wait for it to dry and press camera mount to windshield
4. Remove the plastic film from suction mount. Secure the mount to windshield by firmly pressing against the glass and lift up the tab towards the windshield to secure



## 2.2.2 Adjust the camera angle position

1. MDR-150 camera angle can be tilted up / down, as well as swivel.

Tighten the bracket mount to secure angle

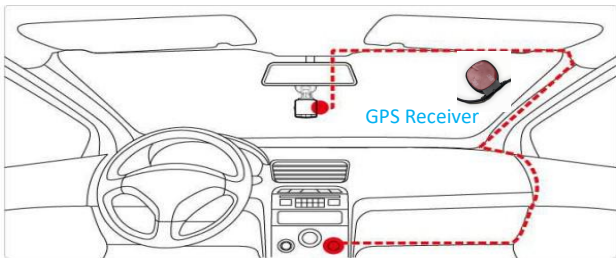


GPS Receiver / Power Cable



## 2.3 Connecting Power

Use only the supplied car adapter to power up the camera and charge the built-in battery.



1. Connect one end of the car power to the USB connector of the MDR-150.

**Ensure the GPS receiver is mounted to windshield with adhesive side facing the sky for better signal reception**

Power output of MDR power cable :DC 5V / 1500mA

2. Plug the other end of the car charger to the cigarette lighter socket of the vehicle. Once the vehicle engine is started, the camera automatically turns on. Car charger input:



### **Important Note:**


1. Use the MDR with the supplied charger only. Do NOT use other power chargers to avoid damage to camera or battery.
2. Do NOT modify the power cable or connection method as outlined in this manual. Altering the power cable will void all warranty.

**Note:** On certain vehicles, the cigarette lighters are constantly ON (Hot) so the MDR recording will continue even when the vehicle is powered off. If this happens, please manually turn off the camera or remove the car adapter from the cigarette lighter to prevent battery drain

## 2.4 Powering the MDR-150 On / Off

### 2.4.1.1 Power On / Recording

MDR will automatically power and record on when vehicle powers on. Red blinking dot displayed on the top left corner of screen

To turn off the MDR power, press the  button on the Left side of camera



### 2.4.1.2 Stop Video Recording

To stop recording, press the **OK** button once. Red blinking dot will stop.

To resume recording press **OK** button again

### 2.4.1.3 Parking Monitor (Video saved to SOS folder)

MDR will auto wake up and record 30 sec video clip when impact or shock is detected while vehicle is parked. This feature utilizes the built-in Li-Ion battery to power the MDR during this mode, feature will continue until battery power is depleted.


### 2.4.1.4 Motion Recording

Motion recording can be enabled in settings if MDR is constantly powered by vehicle. MDR will **ONLY** record video when motion is activated. When no motion is detected, system returns to standby mode. To stop Motion recording, press **OK** while MDR is recording in this mode and no movement is detected in front of the MDR.

### 2.4.1.5 G-Sensor Impact (Video saved to SOS folder)

MDR built-in shock sensor auto detect impact (based on sensitivity) and will save recordings when detected. Shock sensor sensitivity can be adjusted in settings – Low, Med, High

### 2.4.1.6 Enable / Disable Audio Recording

Press the  arrow button to Enable / Disable audio recording while MDR is recording Video. Microphone icon will display

### 2.4.1.7 Enter Menu Setting Mode

Stop recording by pressing the **OK** button once. Red blinking dot will stop

Press **M** button to enter 1<sup>st</sup> page of setting menu, press **M** button again for 2<sup>nd</sup> page of settings

## 3. Settings Menu

Settings 1 - Pg. 1



Settings 1 – Pg. 1 Cont'd



Settings 2 - Pg. 1



Settings 2 – Pg. 1 Cont'd



## 3.1 Setting List

### Settings Page 1 - Press M button Once

Menu Item	Description	Available option
Video Resolution	Set the video recording resolution	1920 X 1080 @ 30 FPS 1280 X 720 @ 120 / 60 / 30 FPS
Loop Recording	Set the recording duration for each video file segment. A new video clip will automatically start when reaches duration	Off, 1 Min, 3 Min, 5 Mins, 10 Mins
WDR	Wide Dynamic Range for video	Off / On
EV	Set the exposure compensation	Set exposure level between + 2.0 ~ -2.0
Motion Detection	MDR will ONLY record video for 30 seconds when camera detects any motion. MDR must be powered by power cable for feature to work. <b>NOTE:</b> MDR does <u>NOT</u> record if not motion is detected.	On / Off
Audio	Enable/Disable voice recording	On / Off
Date Stamp	Enable/Disable the date stamp.	On / Off
G Sensor (Shock)	The built-in shock sensor will detect the level of impact based on the settings. MDR will automatically trigger event recording when corresponding level of shock is detected while driving	Off / Low / Medium / High
Parking Monitor	When vehicle is parked, MDR will auto wake up and record video clip when shock or impact to the vehicle is detected. It utilizes the MDR's built-in battery for power	Off / Low / Medium / High
GPS	GPS is enabled by default so that MDR records speed and route history. Must use EX15-GPS power cable	Off / KMH / MPH

## 3.1 Setting List

### Settings Page 2 - Press M button twice

Date/ Time	Set the date, time and display format	Press $\blacktriangledown$ $\blacktriangle$ button to adjust the value, press the OK button to switch the field and confirm
WiFi	Enable / Disable the WiFi on MDR. WiFi must first be enabled on MDR to view the video using Morbillify smartphone app  Go to smartphone WiFi setting, find and connect to MDR-150XXXXXXX  <b>PW: 12345678a</b>  Connect to MDR-150 WiFi on smartphone, then return to MDR app	On / Off
Auto Power Off	Auto power off timer to shut off the MDR (Not recommended)	Off / 3 Mins / 5 Mins / 10 Mins
Screensaver Time	Timer before LCD screen turns off (MDR will remain powered on)	Off, 1 Min, 3 Min, 5 Mins
Beep Sound	Beep sound when button is pressed	On / Off
Language	Set the OSD menu language.	English, Français, Español, Português, Deutsch, Italiano, Simplified Chinese, Traditional Chinese, Russian, Japanese, Korean
Frequency	Recommend 60 Hz for US	50 Hz / 60 Hz
Format SD Card (64GB SD card max)	Format and delete all data on SD card Save any important video prior to format	Yes / No
License # MDR-150	Set license plate info to be watermarked on video Default = Morbillify MDR-150	Long press M button to enter setup option Once cursor moves to letter, press to change letter Press OK to enter Repeat as needed Long Press M to go to next row When done, long press M to go to OK. Press M to exit men
Default	Reset all settings to factory default	Yes / No
Version	Firmware Version	



## 4. Video Playback

### 4.1 Playback directly on MDR-150

Video playback can only be accessed when MDR is NOT recording.

1. To stop recoding, press **OK** button
2. Long press (2 seconds) the **M** button twice
3. Navigate the saved video files by pressing ▼ / ▲
4. Press OK to play file
5. Exit playback mode by pressing **M** button

### 4.2 Playback video via MDR App

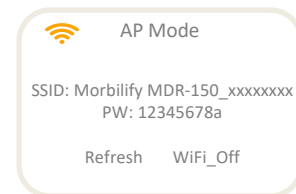
MDR app available on iOS and Google (**MORBILIFY MDR**)

Video playback can only be accessed when MDR is NOT in recording mode

1. **Quick access button** – Press Up button▲ on MDR-150 for shortcut access toWiFi setting. Select WiFi and enable
1. **Standard Operation:** To stop recoding, press **OK** button
2. Press **M** button twice to access 2<sup>nd</sup> page of Settings menu
3. Press ▼to highlight **WiFi**
4. Press **OK** to select WiFi
5. Press **OK** to enable WiFi



## 4.2 Playback video via MDR App - Continued



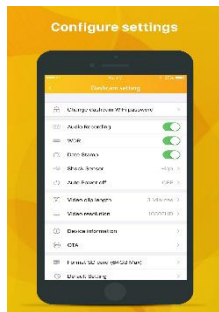
1. Press **ON** to turn on WiFi on MDR
2. See the WiFi SSID MDR150-xxxxxxx

### Go to Smartphone (iPhone or Android)

1. Go to WiFi setting in Smartphone
2. Find SSID MDR-150-xxxxxxxxx
3. Connect to SSID MDR-150-xxxx
4. PW = **12345678a**
5. Open Morbilify MDR app
6. Return to MDR-150 camera, select **Connect**
7. Once connected, can see live view, SD card playback, image playback and setting configuration

## 4.2.1 MDR App

App Name = Morbilyfy MDR



## 5 View Recordings on PC

### 5.1 Using Media Player

MDR-150 videos are saved as MOV files and can be viewed via standard Media Players.

Do NOT remove SD Card from MDR while system is recording or powered on. This will corrupt the SD card

To view recordings:

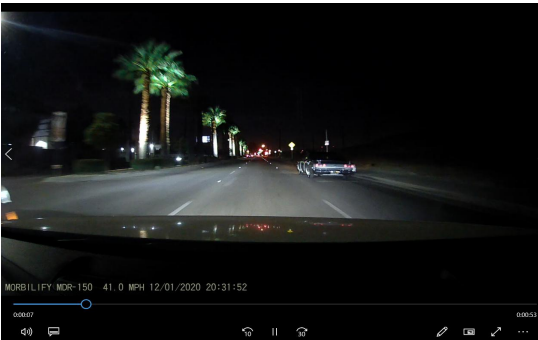
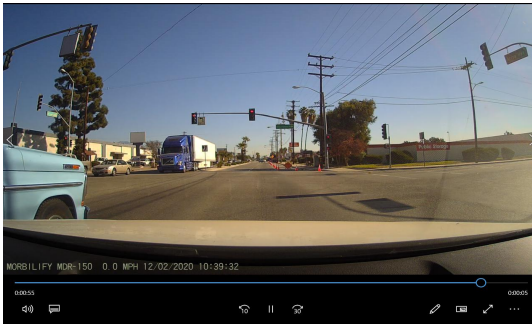
1. Safely remove the Memory card from the MDR-150 after it has been powered off.
2. Insert Memory card to a computer. A SD card slot or USB SD card is required (Not included)
3. Select the Drive the SD card is located and select the file folder to view .
4. Select the file to view via Media Player.

Name	Date modified	Type	Size
2020_1202_191418_001203	12/2/2020 7:14 PM	MP4 File	26,348 KB
2020_1202_104091_001203	12/2/2020 10:40 AM	MP4 File	32,163 KB
2020_1202_104706_001205	12/2/2020 10:47 AM	MP4 File	43,821 KB
2020_1202_104606_001204	12/2/2020 10:46 AM	MP4 File	64,681 KB
2020_1202_104507_001203	12/2/2020 10:45 AM	MP4 File	64,679 KB
2020_1202_104238_001218	12/2/2020 10:42 AM	MP4 File	25,397 KB
2020_1202_104138_001217	12/2/2020 10:42 AM	MP4 File	64,689 KB
2020_1202_104038_001216	12/2/2020 10:41 AM	MP4 File	64,688 KB
2020_1202_103938_001215	12/2/2020 10:39 AM	MP4 File	64,682 KB
2020_1202_103838_001214	12/2/2020 10:38 AM	MP4 File	64,690 KB
2020_1202_103738_001213	12/2/2020 10:37 AM	MP4 File	64,689 KB
2020_1202_103638_001212	12/2/2020 10:36 AM	MP4 File	64,692 KB
2020_1202_103538_001211	12/2/2020 10:35 AM	MP4 File	64,680 KB
2020_1202_103438_001210	12/2/2020 10:34 AM	MP4 File	64,695 KB
2020_1202_103338_001209	12/2/2020 10:34 AM	MP4 File	64,686 KB
2020_1202_103238_001208	12/2/2020 10:33 AM	MP4 File	64,686 KB
2020_1202_103137_001207	12/2/2020 10:32 AM	MP4 File	64,683 KB
2020_1202_103037_001206	12/2/2020 10:31 AM	MP4 File	64,688 KB
2020_1202_102937_001205	12/2/2020 10:30 AM	MP4 File	64,691 KB
2020_1202_102837_001204	12/2/2020 10:29 AM	MP4 File	64,684 KB

## 5 View Recordings on PC

### 5.1 Using Media Player

MDR-150 videos are saved as MOV files and can be viewed via standard Media Players.



## 6 EX15-GPS (Passive GPS Power Cable)

### 6.1 Record Speed and Route History



EX15-GPS receiver cable is included with MDR and is equipped with built-in passive GPS receiver, which records speed and route history along with the video.

When EX15-GPS is utilized, the playback of video recordings can be viewed via PC Desktop software.

#### PC Desktop Software

A special PC desktop software is required and available free of charge to download on [www.Morbilify.com](http://www.Morbilify.com)

When playback on PC desktop software, the video, speed and map are displayed concurrently to show the location of the vehicle.

All recordings are shown from pre-recorded data. System does NOT show real time tracking / location.

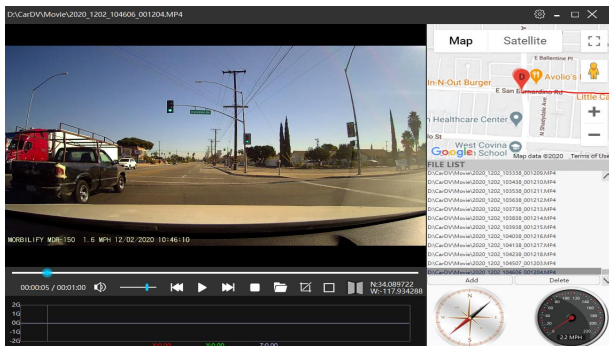
#### NOTE:

**GPS Signal may take several minutes to acquire depending on several factors such as location, environment, buildings.**

## 6.2 View Speed and Route History via PC Player

To view video with speed and location history:

1. Insert SD card into Windows PC
2. Open PC Playback software (GX Player)
3. Go to settings Menu, Select (English), MPH, and Google Map
4. Select Folder icon and select SD card to view videos



Speed indicated in video will differ slightly from the speedometer in PC Player

## MORBILIFY LIMITED WARRANTY

Morbilify warrants the system against defects in material and workmanship for a period of **one (1) year** from the date of original purchase. During this period, Morbilify's liability for any defective product, or any product part, shall be limited to the repair or replacement of the product, at Morbilify's sole discretion.

This warranty does not apply to defects or damages resulting from mishandling, accident, abuse, negligence, lightning, water/liquid, power surges, improper interfacing, operation outside of design limits, misapplication, improper repair, or unauthorized modification.

The term "Morbilify Product" is limited to the hardware components and required firmware. It DOES NOT include software applications or programs, non-Morbilify products or peripherals. To the extent permitted by local law, all non-Morbilify products or non-Morbilify branded peripherals - such as external storage SD card are provided with the respective manufacturer's own warranties directly to you, and are not covered by this Limited Warranty.

To obtain service within the warranty period, please contact Morbilify at [tech@morbilify.com](mailto:tech@morbilify.com) for assistance. If product repair or replacement is necessary, a Return Merchandise Authorization (RMA) will be issued. The Customer will be solely responsible for shipping charges, insurance and proper packaging to prevent breakage in transit, whether or not the product is covered by this warranty. All shipments of repaired or replaced products by Morbilify will be F.O.B. California.

**MORBILIFY MAKES NO OTHER WARRANTIES, EXPRESS OR IMPLIED, AS TO MERCHANTABILITY OR FITNESS FOR A PARTICULAR PURPOSE OF ANY PRODUCT SOLD UNDER THIS CONTRACT. UNDER NO CIRCUMSTANCES SHALL MORBILIFY BE LIABLE FOR ANY INDIRECT, INCIDENTAL, SPECIAL, PUNITIVE OR CONSEQUENTIAL DAMAGES INCLUDING, WITHOUT LIMITATION, INFRINGEMENT OF THIRD PARTY RIGHTS, LOST GOODWILL, LOST REVENUES OR PROFITS, WORK STOPPAGE, DATA LOSS, SYSTEM FAILURE, IMPAIRMENT OF OTHER GOODS, COSTS OF REMOVAL AND REINSTALLATION OF THE SYSTEM, LOSS OF USE, INJURY TO PERSONS OR PROPERTY ARISING OUT OR RELATED TO THE SYSTEM WHETHER BASED ON BREACH OF WARRANTY, BREACH OF CONTRACT, TORT OR OTHERWISE. IN NO EVENT SHALL MORBILIFY'S LIABILITY EXCEED THE ACTUAL PURCHASE PRICE OF THE SYSTEM WITH RESPECT TO WHICH ANY CLAIM IS MADE.**

The information in this user guide reflects the current technical specifications at the time of print. **Morbilify reserves the right to change the technical or physical specifications and features without prior notification.** While every effort has been made to ensure the accuracy of the information, certain specifications are based on approximate figures.

All trademarks, service marks, trade names, product names and logos are the property of their respective owners.

Morbilify [www.morbilify.com](http://www.morbilify.com) Email: [info@Morbilify.com](mailto:info@Morbilify.com)